

International Journal of Innovative Research in Science, Engineering and Technology

(An ISO 3297: 2007 Certified Organization)

Website: www.ijirset.com

Vol. 6, Issue 6, June 2017

A Study of Professional Attitude of Sen. Sec. Students in Relation to Their Academic Achievements on the Basis of Parental Socio- Economic Status

Dr. Shashi Prabha Negi

Principal, Shri Guru Teg Bhadur college of Education, Sehke, Malerkotla, Punjab, India

ABSTRACT: The Purpose of the present study was to find out the academic achievements of the students of Sr. Sec. Schools (Dera bassi, Punjab) in relation to their parental Socio Economic status. The sample consists 200 students, randomly selected from various Se. Sec. School students of Derabassi. The data was analyzed by the mean, S.D and T. ratio. There is no significant difference between professional attitude of male & female of secondary school students. There is no significant difference between socio economic statuses of students of senior secondary school. There is any correlation between professional attitude and socio-economic status of parents of senior secondary students.

KEYWORDS: Professional attitude, Academic Achievement, Socio economic Status.

I. INTRODUCTION

With the advancement in science & technology new vocations are emerging day by day and are replacing the traditional ones. Today the young ones are preparing for such vocations, which did not exist a generation ago. Drastic changes such as reduction of manpower, civil rights, equal opportunities, rights of women, technological changes, fashion trends, massive entry of women in the world of work, exist from female dominant occupations, changes from one vocation to another shape our life with tremendous force. Professional attitude may be regarded as a particular case of decision making under certainty when the aim is to reach an optional choice among alternatives. The choice may be regarded as a particular case of decision making under uncertainty such as lack of information, lack of self awareness, lack of resources (time & money) cognitive limitations and lack of Frame work for identifying and processing making an optimum vocational choice is a matter of vocational development or level of vocational attitude maturity in a particular case.

Career behavior may be defined as manifestation of underlying psychological and ecological transaction and interaction (Super, 1957 & 1976). Career as viewed by Sears (1982) as totality of work done in her/his lifetime. Professional choice is not just one choice made at a particular point in life but rather a series of decisions made over several years.

II. PROFESSIONAL ATTITUDE

Level of PROFESSIONAL attitude and its is a construct which is manifested by person's knowledge about profession, his orientation towards the problem of professional choice, his attitude and understanding towards world of work etc. Professional attitude in particular cases is said to be high if a person is aware of different types of professions and he is ready to settle a proper vocation for himself by understanding himself and requirement of work. Level of professional attitude of a person depends upon number of factors that is intellectual potentials.

International Journal of Innovative Research in Science, Engineering and Technology

(An ISO 3297: 2007 Certified Organization)

Website: www.ijirset.com

Vol. 6, Issue 6, June 2017

III. SOCIO-ECONOMIC STATUS

The term 'socio-economic' is composed of two words i.e. socio and economic. Socio is concerned with society, which is a joint stock company to which parents of students belongs and economics denotes the material belongings of a person. Socio-Economic status would therefore be ranking of an individual by the society he lives in terms of his material belongings and cultural possession along with the degree of respect power and influence he/she wields. Socio-Economic status effects the level of professional attitude as person belonging to high socio-economic status have more access to various types of information, good school and home environment etc. Hurlock, (1964) stated, "A social person is one who conforms to the three criteria's of social development. He should behave in approved manner, play the role which society prescribed for him and possess favorable attitude toward people and social activities." Maclever and Page, (1937) stated, "Social status, therefore is an indication of ones position of respect, prestige and influence in social structure." Socio-Economic status would therefore be ranking of an individual by the society he lives in, in terms of his material belongings and cultural possession along with the degree of respect power and influence he/she wields.

IV. NEED AND SIGNIFICANCE OF THE STUDY

In the present investigation, it is assumed that socio-economic status of family may be important variable that affects the professional attitude of student. Jonson and Kirchner (1955), Dillard (1976), Kaur Sarbjeet (2003) reported the significant relationship between socio-economic status and vocational behavior.

V. STATEMENT OF THE PROBLEM

A STUDY OF PROFESSIONAL ATTITUDE OF SEN. SEC. STUDENTS IN RELATION TO THEIR ACADEMIC ACHIEVEMENTS ON THE BASIS OF PARENTAL SOCIO-ECONOMIC STATUS

OPERATIONAL DEFINITIONS:

PROFESSIONAL ATTITUDE

It includes an occupation to which a person is specially drawn or for which is suited trained or qualified.

SOCIO-ECONOMIC STATUS: Socio economic status is an economic and sociological combined total measure of a person's work experience and of an individual's economic and social position in relation to others, based on income education and occupation.

OBJECTIVES OF THE STUDY

1. To study the professional attitude of students of senior secondary school.
2. To study the socio-economic status of senior secondary school Students.
3. To compare the socio-economic status of male and female of senior secondary school Students.
4. To study the relationship between professional attitude and socio-economic status of students of senior secondary school.

HYPOTHESIS OF THE STUDY

1. There is no significant difference between professional attitude of male & female of secondary school students.
2. There is no significant difference between socio economic status of students of senior secondary school.
3. There is no correlation between professional attitude and socio-economic status of parents of senior secondary students.

DELIMITATIONS OF THE STUDY: Only the Senior. Secondary. Schools students constituted the universe for the conduct of the present study.

SAMPLE OF THE STUDY: In order to conduct the present study a sample of 200 students (100

International Journal of Innovative Research in Science, Engineering and Technology

(An ISO 3297: 2007 Certified Organization)

Website: www.ijirset.com

Vol. 6, Issue 6, June 2017

boys and 100 girls) will be selected randomly from different schools of Mohali District.

TOOLS TO BE USED: Socio-Economic Status Scale Questionnaire (SESSQ) By Ashok Kalia and Dr. Sudhir Sahu (Rohtak)

SAMPLE OF THE STUDY: Probably no concept is as fundamental to conduct of research as interpretation to its results as is sampling. There are various methods of sampling out of which random sampling is considered to be best because it is unbiased. In the present study simple random sampling has been used as it happens to be the most convenient method for data collection. A sample of 200 students, both boys and girls of Sen. Sec. Students were drawn from four schools, situated in district Mohali. The following table shows the sample of study

Table: Showing the Sample of the Study

Name of the School	No. of Students	Category
Jain Sen. Sec. school	50	Boys
R.K. Sen. Sec school	50	Boys
D.A.V. Public sen. Sec. school	50	Girls
S.G.T.B public sen. Sec. school	50	Girls

RELIABILITY: Reliability of the scale was determined by Kuder Richardson formula – 20 on the scores of standardization sample. The reliability coefficient was equal to .89 which is very high.

VALIDITY

To find out the validity of the scale tetracoric between the total score on 20 selected items and total scores on 100 items pool of preliminary draft was calculated which .875 was.

Table-1
Showing the Level of professional Attitude of Sen. Sc school students

STANINE	RANGE OF SCORES	FREQUENCY	PERCENTAGE	CATEGORY
9	15 & above	3	9%	High
8	14-14	3		
7	13-13	3		
6	11-12	13	54%	Average
5	10-10	10		
4	8-9	31		
3	7-7	22	37%	Low
2	6-6	12		
1	5 & below	3		
	N = 100	$\bar{X} = 8.69$	S D = 2.26	

Figure: Showing the Level of professional attitude of Sr. sec. Schools students through Pie Chart

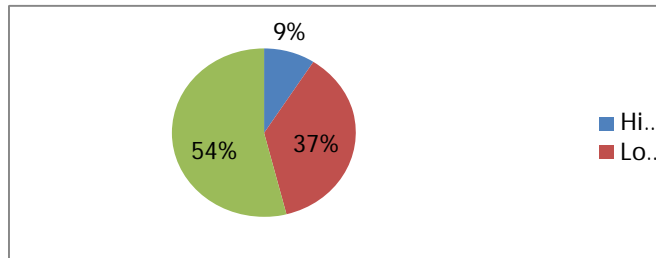
The table shows that 9% girls have high level professional attitude m, where 37% girls have low level of professional attitude and 54% girls have average level of professional attitude.

International Journal of Innovative Research in Science, Engineering and Technology

(An ISO 3297: 2007 Certified Organization)

Website: www.ijirset.com

Vol. 6, Issue 6, June 2017



LEVEL OF SOCIO – ECONOMIC STATUS OF SR. SEC. SCHOOL STUDENTS

The raw scores were obtained from 200 students of Sen. Sec. School students and data is presented in following table:

Table 2
Showing the Level of Socio – Economic Status of Sr.sec school students.

RANGE OF SCORES	FREQUENCY	PERCENTAGE	CATEGORIES
73 and above	20	10	High
46 to 72	110	55	Average
45 & Below	70	35	Low
N = 100	X = 50.41	S.D = 13.42	

Figure 2: Showing the Level of Socio–Economic Status of Sen. Sec. School Students through Pie Chart

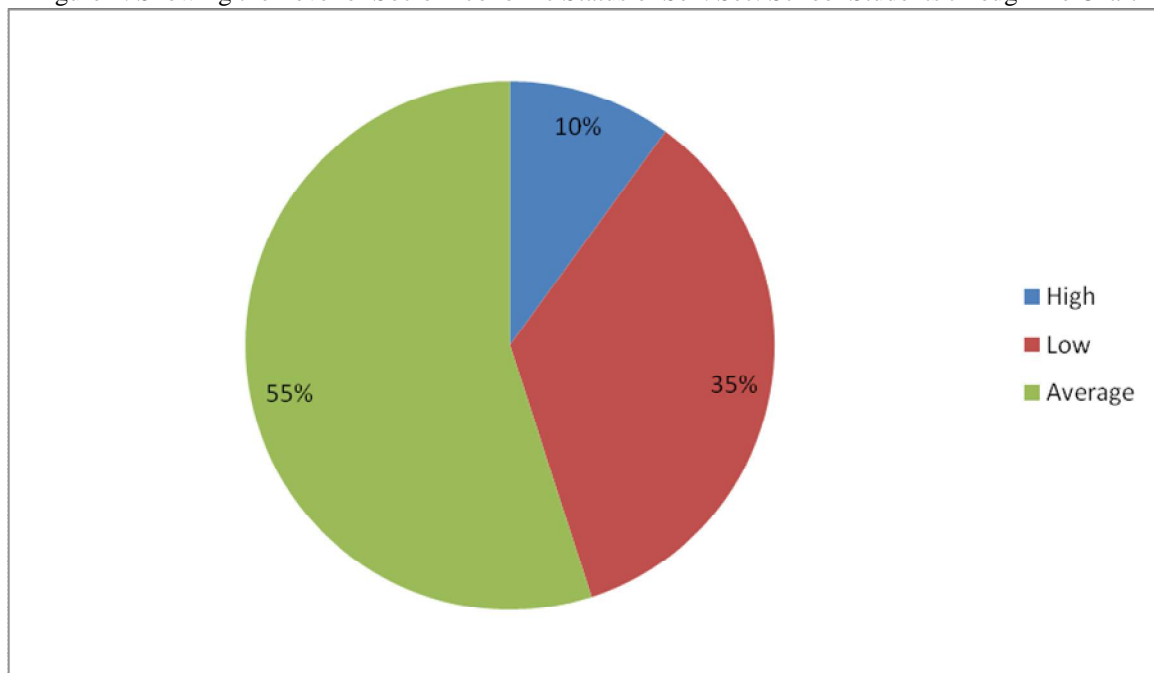


Table 2 shows that 10% students have belong to upper class, 35% students have belonged to lower class and 55% of students have belonged to middle class

International Journal of Innovative Research in Science, Engineering and Technology

(An ISO 3297: 2007 Certified Organization)

Website: www.ijirset.com

Vol. 6, Issue 6, June 2017

Table 3: Showing the Difference between level of professional attitude of Boys and Girls

Sr. No.	Sex	N	Mean	SD	SE _D	t value	Level of significance
1	Boys	100	8.69	2.26	0.393	2.26	Significant at 0.05 level
2	Girls	100	9.58	3.22			

$$df = (100 - 1) + (100 - 1) = 198'$$

The mean score of the level of professional attitude of boys & girls found to be 8.69 & 9.58 respectively. There exist statistically significant difference ($t = 2.26, P < 0.05$) between level of vocational attitude maturity of 10th boys and girls.

Difference between Level of Socio – Economic Status of Boys and Girls: It was assumed that there exists no significant difference between Socio-Economic Status of Secondary School Students. In order to test this assumption two groups of 100 boys and 100 girls were taken and their level of Socio-Economic Status was identified. From the score obtained 't' value between the two groups was calculated. The results are shown in the table:

Table 4: Showing the Correlation between Vocational Attitude Maturity and Socio- Economic Status

Sr. No.	N	Test	Mean	S.D.	r	Types of Correlation
1	100	V.A.M.S.	9.135	2.80	0.023	Positive
2	100	S.E.S.S.	50.41	13.42		

The Calculated correlation is 0.023. It shows that a positive correlation between socio economic status and vocational attitude maturity. It means improvement and increase in socio economic status relates to Improvement and increasing Vocational Attitude Maturity and vice versa.

Major findings of the study are discussed under the following headings:

- Findings related to level of professional Attitude of Boys and Girls
- Findings related to Socio-Economic Status of Boys and Girls
- Findings Related to Correlation between Socio-Economic and Vocational Attitude Maturity

Findings related to socio –Economic status of Sr. Sec. School Students.

As per second hypothesized of study that there is no significant difference between socio –Economic status of 10th Boys and Girls. It is found that there exist statistically significant difference ($t = 0.036, P < 0.01, 0.05$) between socio –Economic status of Sen. Sec school Boys and Girls. It was further notice that 12% boys & 8% girls have high socio –Economic status of sen. Sec. School students, whereas 56% boys and 54% girls middle class and 34% boys and 36% girls have low level socio –Economic status. More than 55% of boys and girls belongs to middle family. So it can be inferred from the results of present study that boys have high socio –Economic status as compared to girls.

Suggestions for Further Study

Research is a branch of human knowledge is never a closed book. There is always persistent need for finding solution to new problems and testing the variety of solution to other problems. There is no piece of meaningful research that does not provide clues for further investigations. The present study open up certain avenues for further research which are briefly listed below: A similar study can be conducted on a larger sample.

1. The study of same nature can be undertaken for the different district of the state.
2. A similar study can be conducted by taking into consideration other variable such as achievement, intelligence, school environment etc.
3. The same study may be extended to other level of education i.e. matric, graduation, post graduation etc.
4. A comparative study can be conducted with respect to different streams of students in order to find out their level of vocational attitude maturity.

International Journal of Innovative Research in Science, Engineering and Technology

(An ISO 3297: 2007 Certified Organization)

Website: www.ijirset.com

Vol. 6, Issue 6, June 2017

REFERENCES

1. Akhter (2012) "Socio-Economic status factors effecting the students achievement International Journal of social sciences and Education. Volume: 2 Issue: 1 January 2012 ISSN :2223-4934.
2. Chand and Singh (2009) "Socio-demographic correlation of language achievement Psycho-lingua 2009, 39(1) 69-73.
3. Davis and Pamela E (2005), The influence of Parent Education and family income on child Achievement. The Indirect Role of Parental Expectations and the Home Environment. Journal of Family Psychology. 19(2); 294-304
4. Gupta, B.P. (1978), A study of personality adjustment in relation to intelligence, sex, socio economic background and personality dimensions of Extroversion and neuroticism, Ph. D. (Edu), Utkal U.
5. Jayachandran Usha, (2003), Socio Economic Determinants of school Attendance in India, Journal of Educational Planning and administration, National Institute of Educational Planning and Administration XVIII, 2, 175-197;
6. Kaur, Sarbjeet (2003), Effect of socio economic status on academic Achievement and Vocational Aspiration of 9th class students M.Ed. unpublished Punjab Uni.
7. Ranjana, (2003), Effect of Parental Educational and socio-economic status on media preference among secondary students, unpublished M.Ed Dissertation, Punjab Uni.